



*An Integrated Education and Training program is defined as “a service approach that provides adult education and literacy activities concurrently and contextually with workforce preparation activities and workforce training for a specific occupation or occupational cluster for the purpose of educational and career advancement” (final WIOA regulations at 34 CFR §463.35).*



Adult Education and  
Literacy Activities



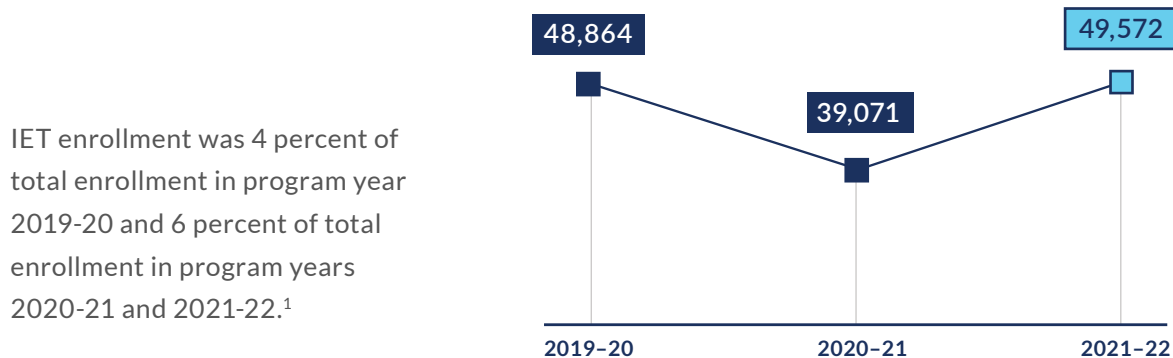
Workforce  
Preparation Activities



Workforce  
Training

*IET enrollment increased by 10,501 participants from program year 2020-21 to program year 2021-22 after declining by 9,793 participants during the COVID-19 pandemic.*

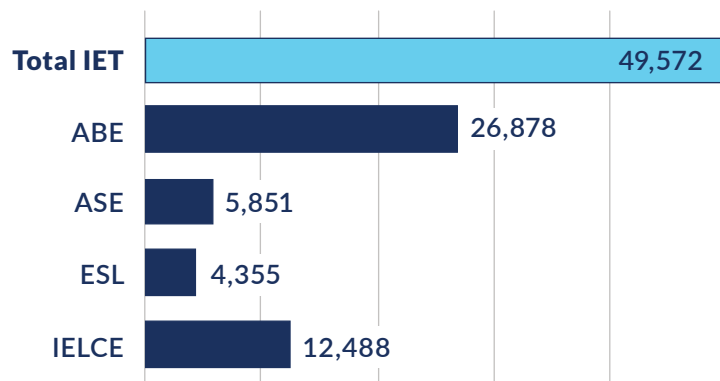
IET Program Enrollment over the last three program years



IET enrollment was 4 percent of total enrollment in program year 2019-20 and 6 percent of total enrollment in program years 2020-21 and 2021-22.<sup>1</sup>

*Participants from all program types participate in IET programs.*

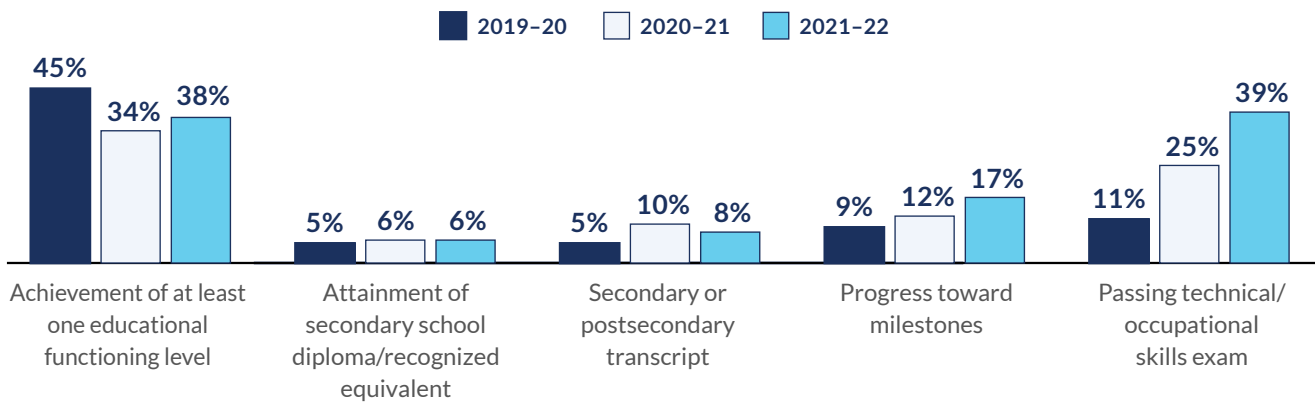
IET Program Enrollment in 2021-22:



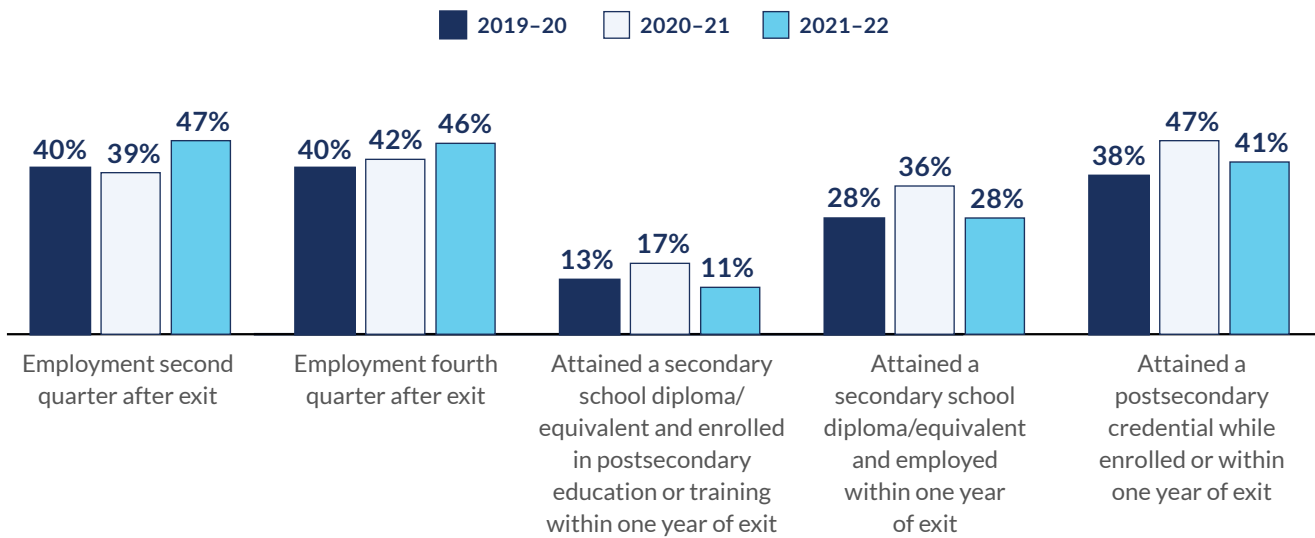
Most IET participants are enrolled in Adult Basic Education or Integrated English Literacy and Civics Education (IELCE; Sec. 243) programs.

*IET programs have successfully advanced the education and careers of its participants who have achieved measurable skill gains, obtained employment, and attained credentials.*

Percentage of participants with different types of measurable skill gains



Percentage of participants achieving outcome



For IET participants who exited an adult education program in 2019-20, 2020-21, and 2021-22 and were employed in the second quarter after exit, the median quarterly earnings were \$4,960, \$4,888, and \$6,405 respectively.

<sup>1</sup>All data are from NRS Table 3 (Participants by Program Type and Age) and NRS Table 11 (Outcome Achievement for Integrated Education and Training Participants).