



*An Integrated Education and Training (IET) program is defined as “a service approach that provides adult education and literacy activities concurrently and contextually with workforce preparation activities and workforce training for a specific occupation or occupational cluster for the purpose of educational and career advancement” (final WIOA regulations at 34 CFR §463.35).*



Adult Education and  
Literacy Activities



Workforce  
Preparation Activities

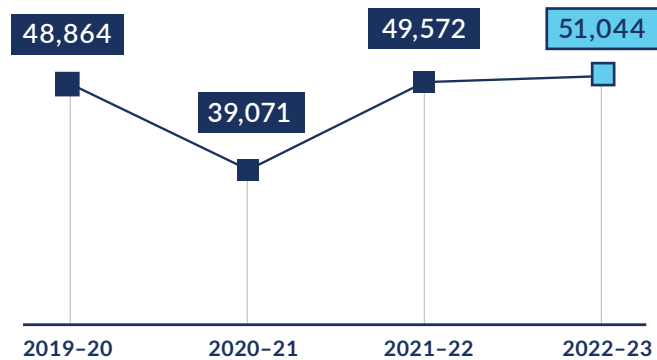


Workforce  
Training

*IET enrollment increased by 1,472 participants in program year 2022-23.*

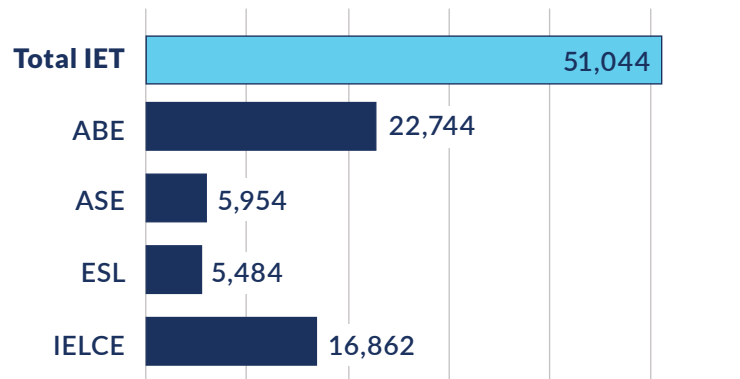
IET enrollment was 4 percent of total enrollment in program year 2019-20 and 6 percent of the total enrollment in program years 2020-21 and 2021-22. It remained consistent in program year 2022-23 at approximately 5 percent of total enrollment.<sup>1</sup>

IET Program Enrollment over the last four program years



*Participants from all program types participate in IET programs.*

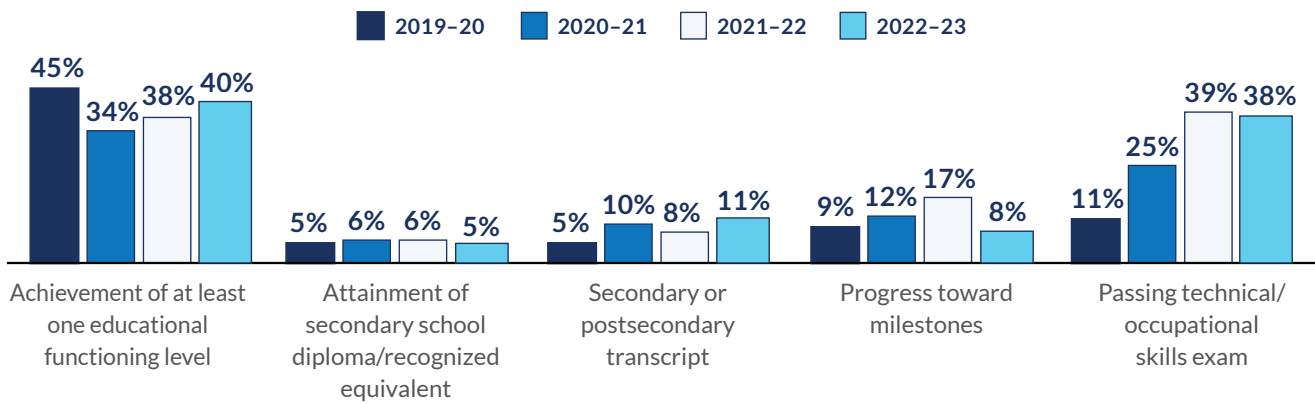
IET Program Enrollment in 2022-23:



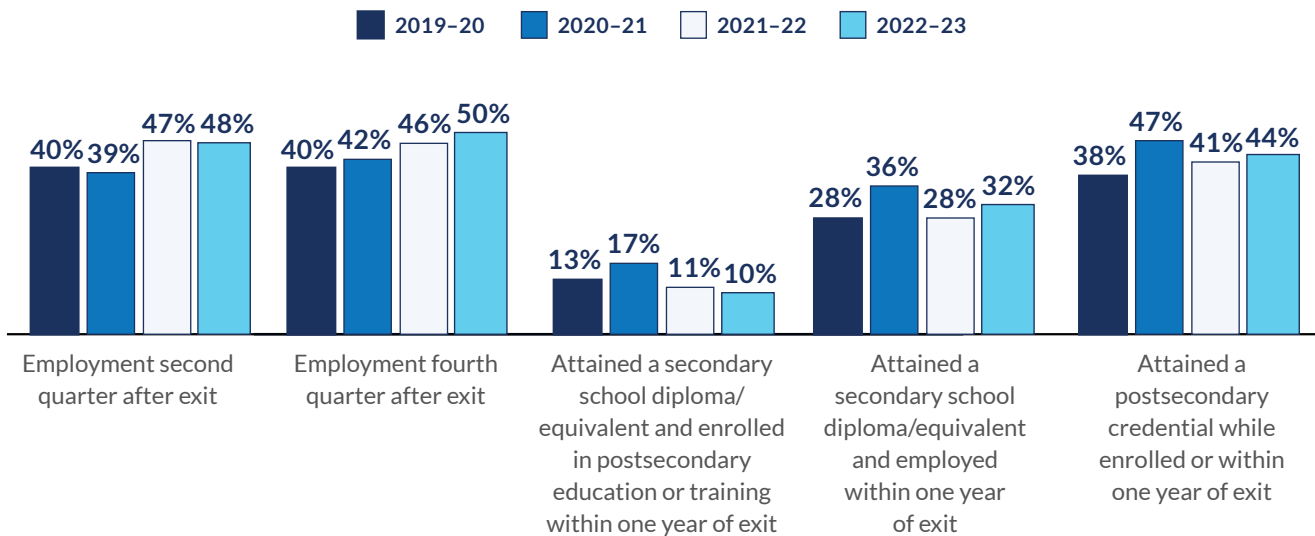
Most IET participants are enrolled in Adult Basic Education or Integrated English Literacy and Civics Education (IELCE; Sec. 243) programs.

*IET programs have successfully advanced the education and careers of participants who have achieved measurable skill gains, obtained employment, and attained credentials.*

Percentage of participants with different types of measurable skill gains



Percentage of participants achieving outcome



For IET participants who exited an adult education program in 2019-20, 2020-21, 2021-22, and 2022-23 and were employed in the second quarter after exit, the median quarterly earnings were \$4,960, \$4,888, \$6,405, and \$6,500 respectively.

<sup>1</sup>All data are from NRS Table 3 (Participants by Program Type and Age) and NRS Table 11 (Outcome Achievement for Integrated Education and Training Participants).